

Figure 1. Retention: All New First-Time Students.

Data Description	Fa 11 to Fa 12	Fa 12 to Fa 13	Fa 13 to Fa 14	Fa 14 to Fa 15	Fa 15 to Fa 16	Fa 16 to Fa 17	Fa 17 to Fa 18	Mean
N Initial	801	776	706	801	724	869	801	782.6
N Retained	390	376	376	379	386	409	414	390.0
Percent Retained	48.7	48.5	53.3	47.3	53.3	47.1	51.7	49.8

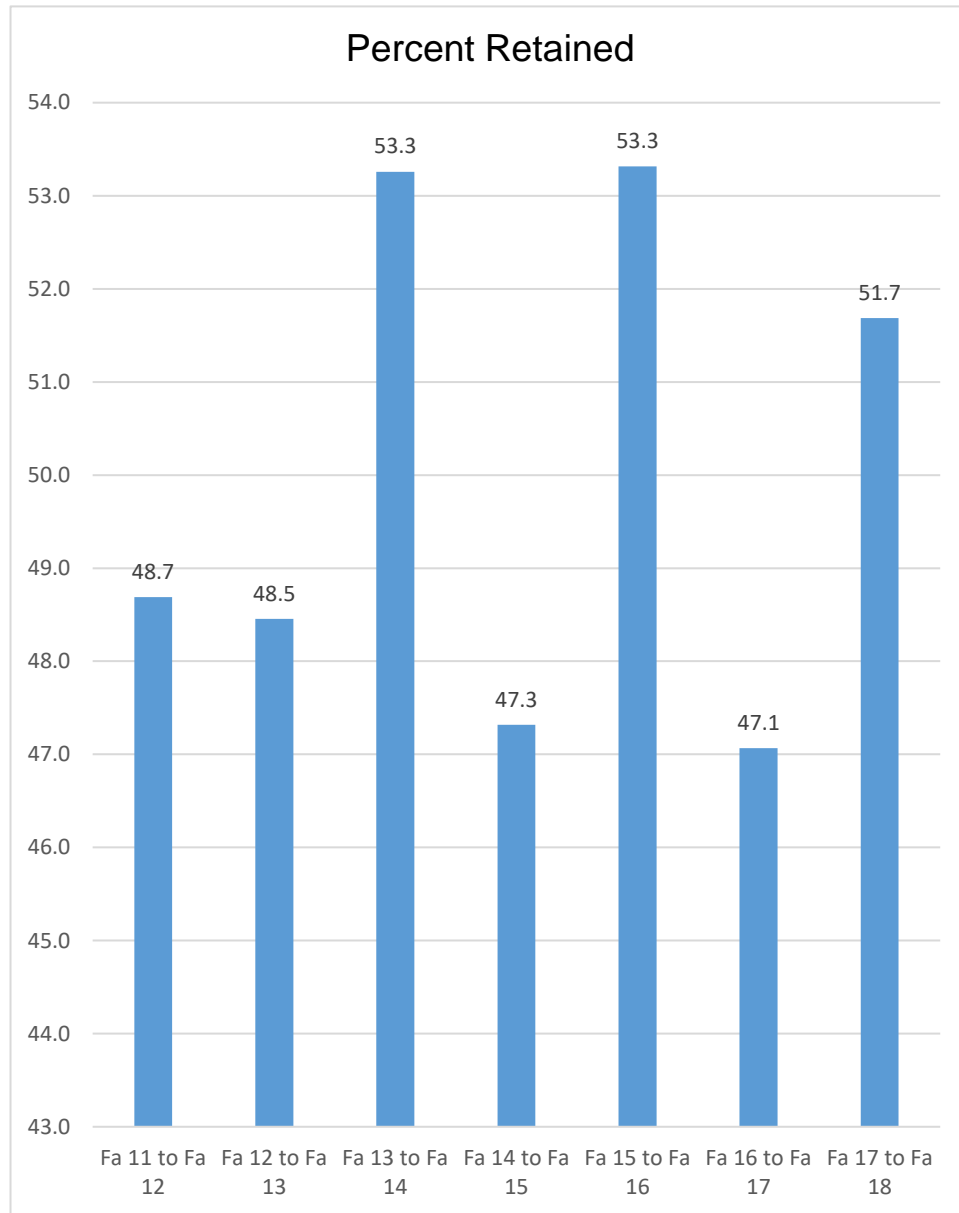


Figure 2. Retention: New First-Time Full-Time Degree Seeking Students and Transfers Out from the Board of Regents.

Data Description	Fa 11 to Fa 12	Fa 12 to Fa 13	Fa 13 to Fa 14	Fa 14 to Fa 15	Fa 15 to Fa 16	Fa 16 to Fa 17	Fa 17 to Fa 18	Mean
N Initial	625	569	525	603	568	684	664	605.4
N Retained	308	289	290	291	323	320	358	311.3
Percent Retained	49.3	50.8	55.2	48.3	56.9	46.8	53.9	51.4
N Transfers out	117	94	75	109	82	122	87	98.0
Same Inst + Transfers Retained	68.0	67.3	69.5	66.3	71.3	64.6	67.0	67.7

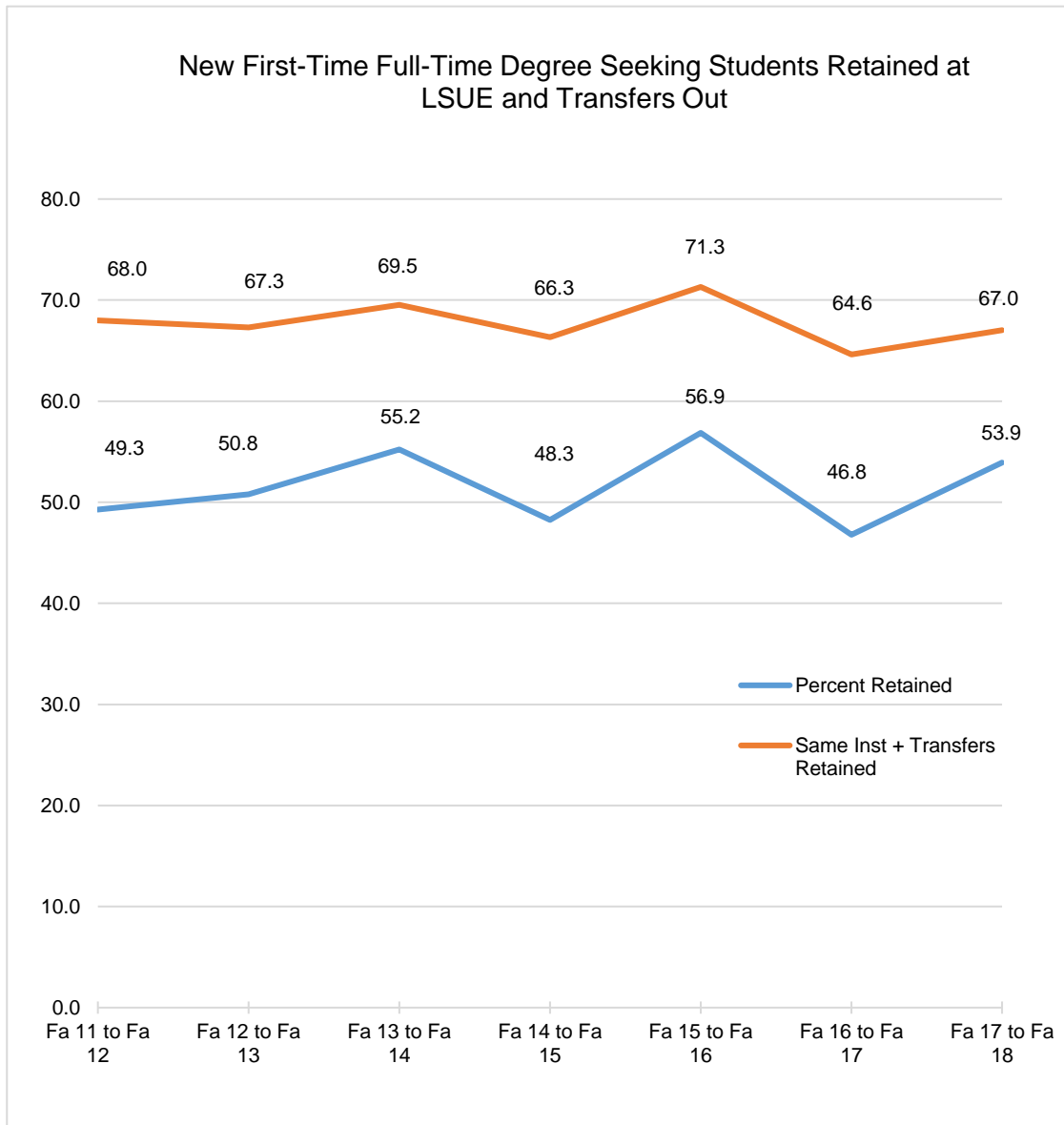


Figure 3. Retention: New First-Time Full-Time Degree Seeking Students including Certificates, Associate's, Bachelor's (Transfers) reported to IPEDS.

Data Description	Fa 11 to Fa 12	Fa 12 to Fa 13	Fa 13 to Fa 14	Fa 14 to Fa 15	Fa 15 to Fa 16	Fa 16 to Fa 17	Fa 17 to Fa 18	Mean
N Initial	627	568	524	602	568	684	664	605.3
N Retained	310	288	290	291	323	321	357	311.4
Percent Retained	49.4	50.7	55.3	48.3	56.9	46.9	53.8	51.5
One Acadiana %	49.5	50.0	55.5	48.3	56.9	--	--	52.0
LSUE IPEDS	49	51	55	48	57	47		51.2
SOWELA IPEDS	46	43	46	57	55	50		49.5
SLCC IPEDS	45	45	53	55	56	48		50.3
BPCC IPEDS	49	50	51	45	50	54		49.8
BRCC IPEDS	49	53	44	48	42	43		46.5
Mean IPEDS	47.6	48.4	49.8	50.6	52	48.4	--	49.5

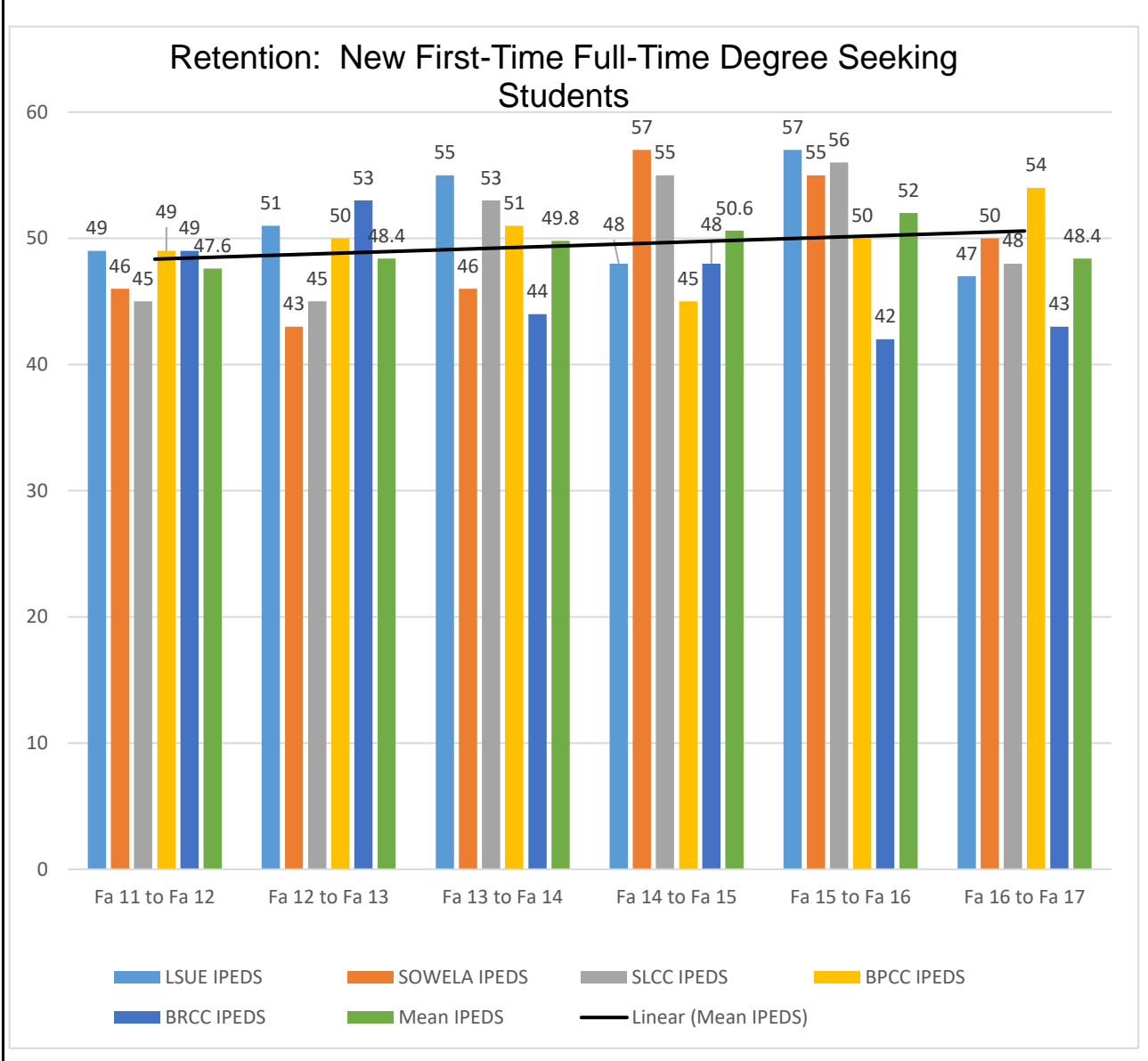


Figure 4. Retention: New First Time Full-Time Associate Degree Seeking Reported to LSU.

Data Description	Fa 11 to Fa 12	Fa 12 to Fa 13	Fa 13 to Fa 14	Fa 14 to Fa 15	Fa 15 to Fa 16	Fa 16 to Fa 17	Fa 17 to Fa 18	Mean
N Initial	305	284	250	316	322	371	364	316.0
N Retained	144	142	129	151	169	168	192	156.4
Percent Retained	47.2	50.0	51.6	47.8	52.5	45.3	52.7	49.5

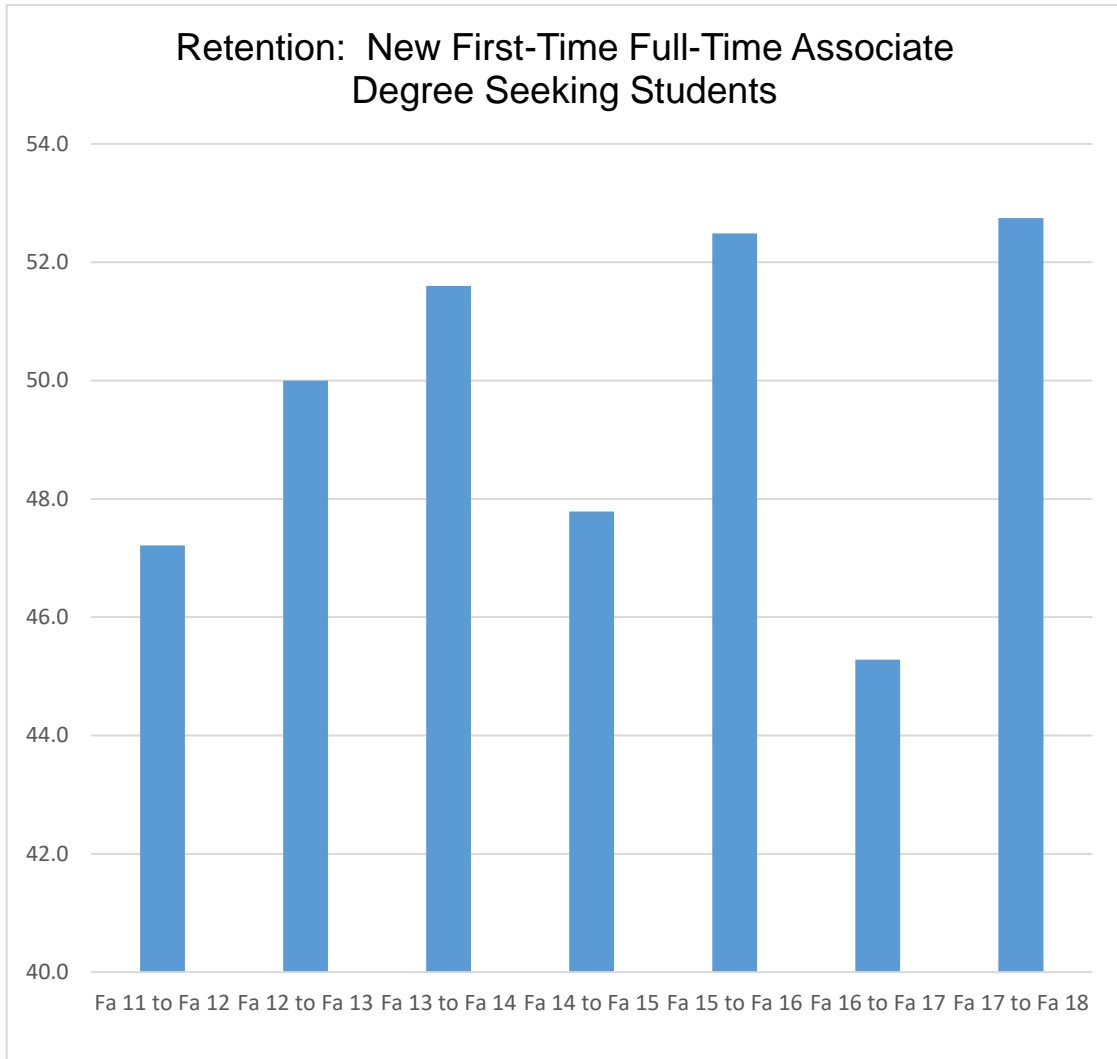


Figure 5. Retention: New First-Time Full-Time Degree Seeking Students Versus Associate Degree Seeking Students.

Data Description	Fa 11 to Fa 12	Fa 12 to Fa 13	Fa 13 to Fa 14	Fa 14 to Fa 15	Fa 15 to Fa 16	Fa 16 to Fa 17	Fa 17 to Fa 18	Mean
N Initial	627	568	524	602	568	684	664	605.3
N Retained	310	288	290	291	323	321	357	311.4
New FF FT Degree Seeking	49.4	50.7	55.3	48.3	56.9	46.9	53.8	51.5
N Initial	305	284	250	316	322	371	364	316.0
N Retained	144	142	129	151	169	168	192	156.4
New FF FT Assoc. Degree Seeking	47.2	50.0	51.6	47.8	52.5	45.3	52.7	49.5

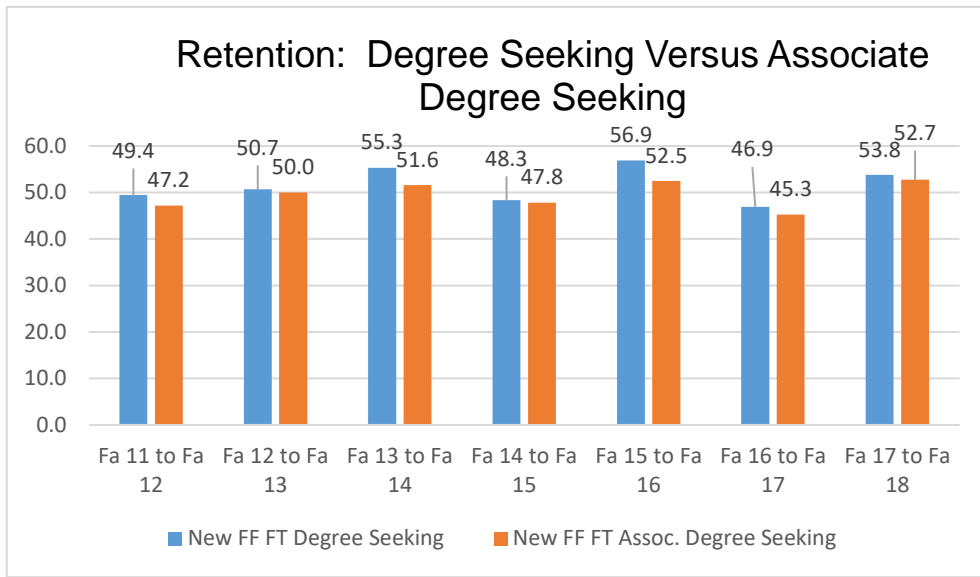


Figure 6. Retention: New First Time Part-Time.

Data Description	Fa 11 to Fa 12	Fa 12 to Fa 13	Fa 13 to Fa 14	Fa 14 to Fa 15	Fa 15 to Fa 16	Fa 16 to Fa 17	Fa 17 to Fa 18	Mean
N Initial	174	208	182	199	156	185	137	177.3
N Retained	80	88	86	88	63	88	57	78.6
Percent Retained	46.0	42.3	47.3	44.2	40.4	47.6	41.6	44.3

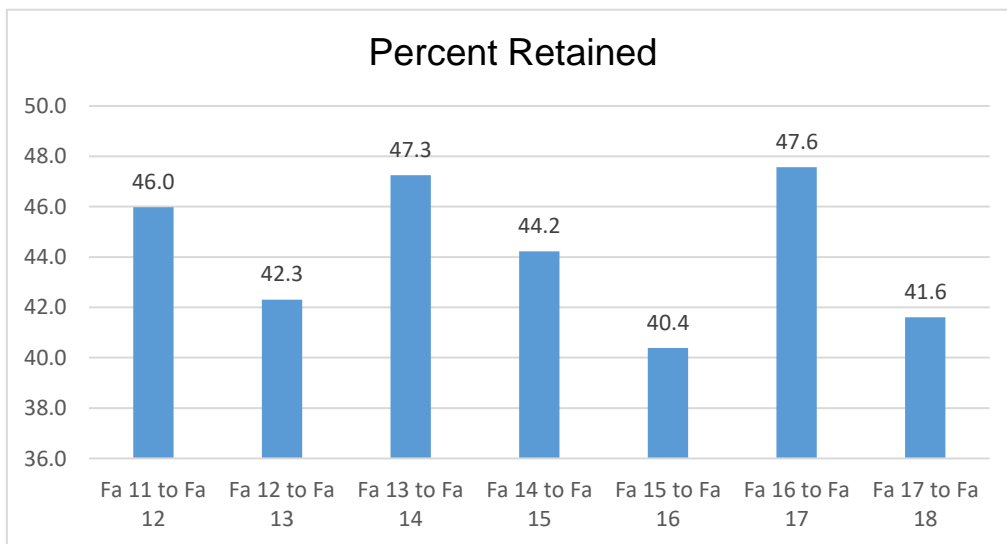
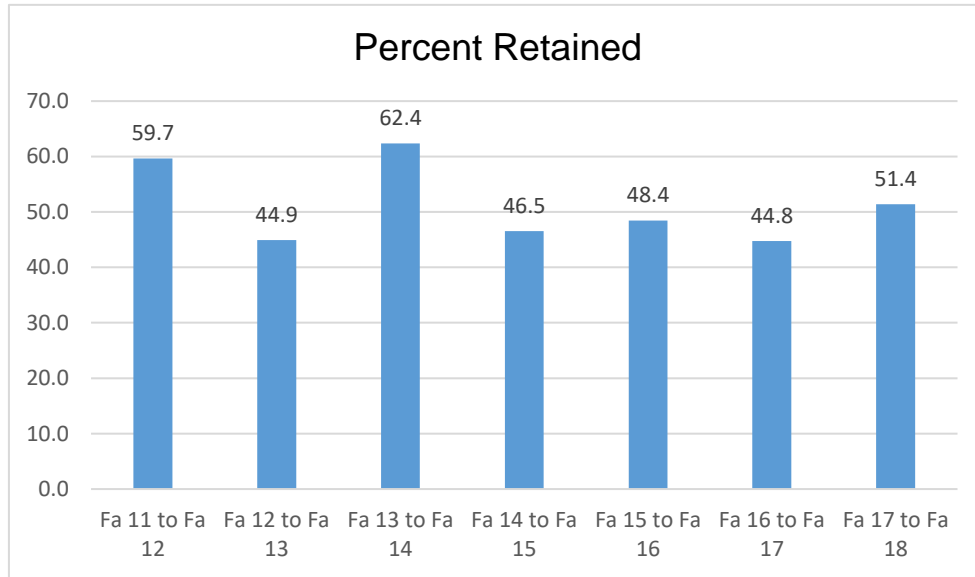


Figure 7. Retention: New First Time ACT Composite = No Scores - 15.

Data Description	Fa 11 to Fa 12	Fa 12 to Fa 13	Fa 13 to Fa 14	Fa 14 to Fa 15	Fa 15 to Fa 16	Fa 16 to Fa 17	Fa 17 to Fa 18	Mean
N Initial	243	236	186	217	161	181	177	200.1
N Retained	145	106	116	101	78	81	91	102.6
Percent Retained	59.7	44.9	62.4	46.5	48.4	44.8	51.4	51.2

**Figure 8. Retention: New First Time ACT Composite = 16-19.**

Data Description	Fa 11 to Fa 12	Fa 12 to Fa 13	Fa 13 to Fa 14	Fa 14 to Fa 15	Fa 15 to Fa 16	Fa 16 to Fa 17	Fa 17 to Fa 18	Mean
N Initial	286	258	278	306	305	355	319	301.0
N Retained	133	119	145	136	146	165	162	143.7
Percent Retained	46.5	46.1	52.2	44.4	47.9	46.5	50.8	47.7

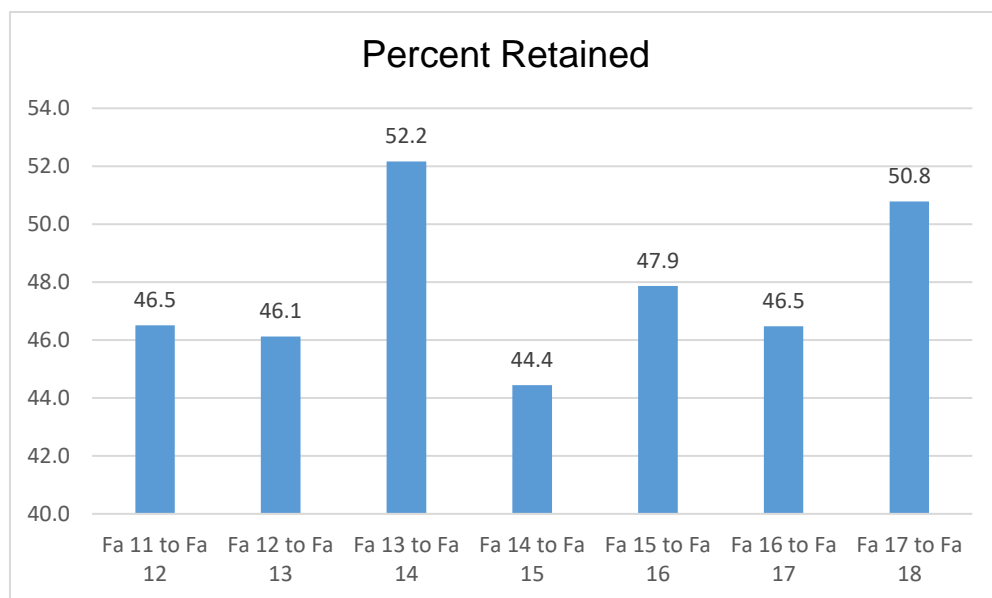
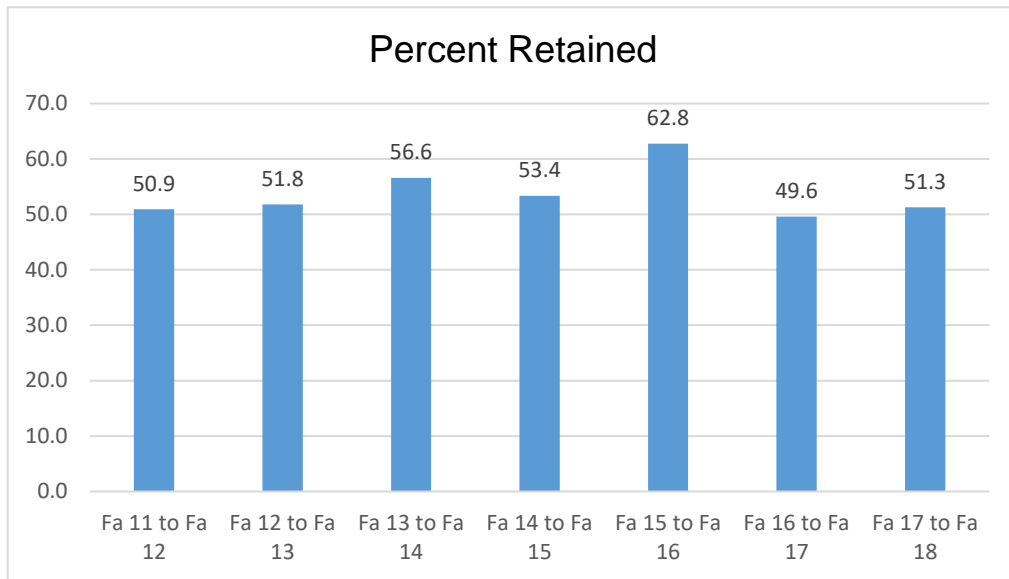


Figure 9. Retention: New First Time ACT Composite = 20-23.

Data Description	Fa 11 to Fa 12	Fa 12 to Fa 13	Fa 13 to Fa 14	Fa 14 to Fa 15	Fa 15 to Fa 16	Fa 16 to Fa 17	Fa 17 to Fa 18	Mean
N Initial	214	226	182	208	196	262	230	216.9
N Retained	109	117	103	111	123	130	118	115.9
Percent Retained	50.9	51.8	56.6	53.4	62.8	49.6	51.3	53.4

**Figure 10. Retention: New First Time ACT Composite = 24-26.**

Data Description	Fa 11 to Fa 12	Fa 12 to Fa 13	Fa 13 to Fa 14	Fa 14 to Fa 15	Fa 15 to Fa 16	Fa 16 to Fa 17	Fa 17 to Fa 18	Mean
N Initial	47	38	43	56	48	58	58	49.7
N Retained	29	23	28	25	31	31	31	28.3
Percent Retained	61.7	60.5	65.1	44.6	64.6	53.4	53.4	56.9

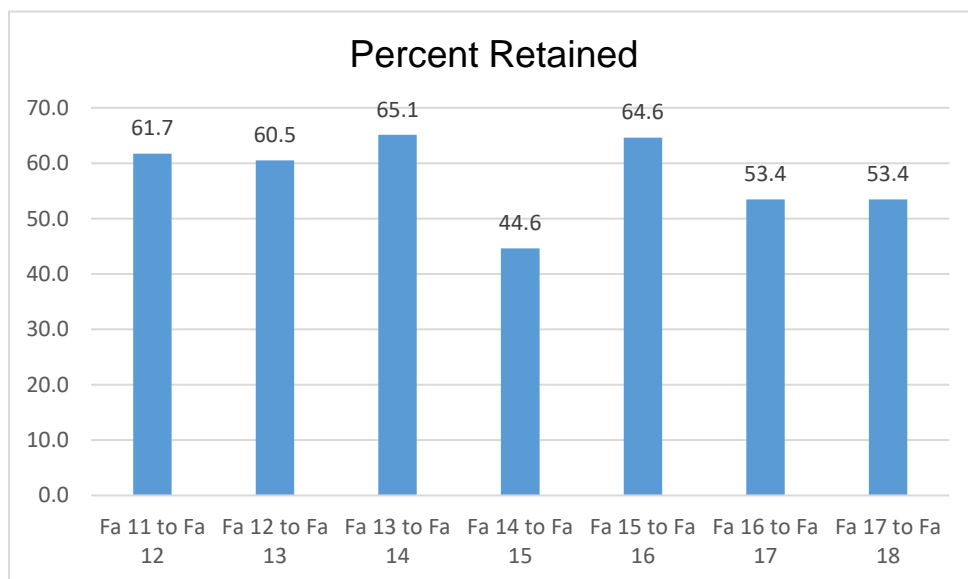


Figure 11. Retention: New First Time ACT Composite = 27+.

Data Description	Fa 11 to Fa 12	Fa 12 to Fa 13	Fa 13 to Fa 14	Fa 14 to Fa 15	Fa 15 to Fa 16	Fa 16 to Fa 17	Fa 17 to Fa 18	Mean
N Initial	11	17	16	14	14	16	17	15.0
N Retained	6	10	7	6	8	5	12	7.7
Percent Retained	54.5	58.8	43.8	42.9	57.1	31.3	70.6	51.4

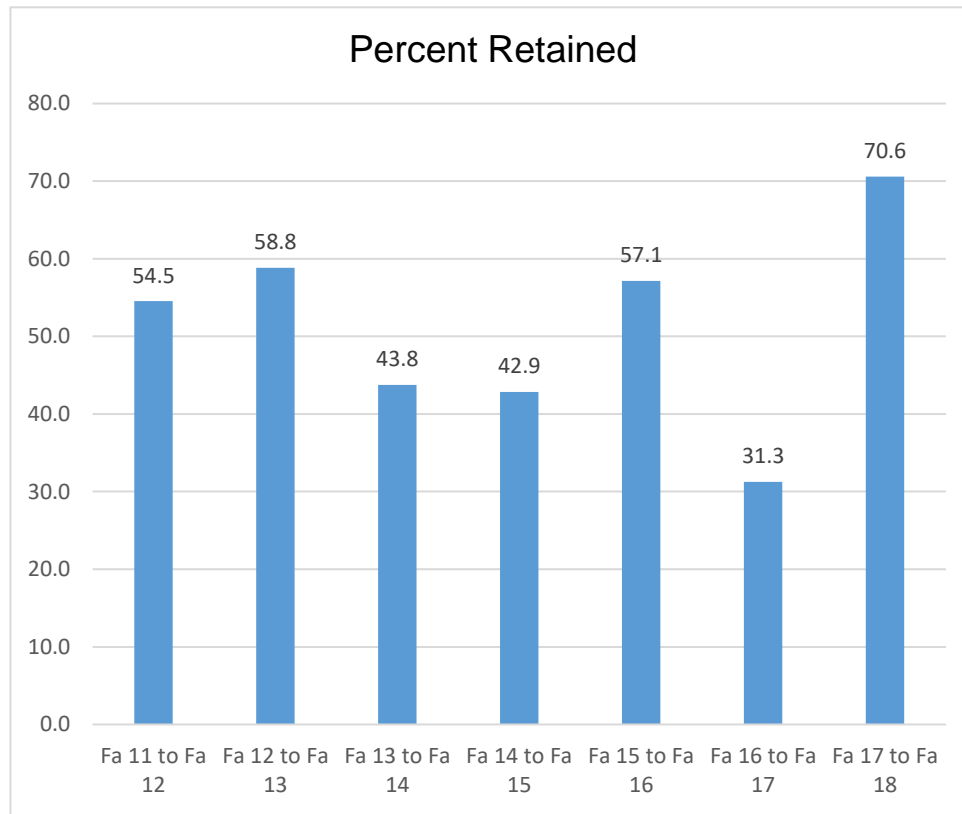


Figure 12. Retention: New First Time Students ACT Composite Comparison.

Data Description	Fa 11 to Fa 12	Fa 12 to Fa 13	Fa 13 to Fa 14	Fa 14 to Fa 15	Fa 15 to Fa 16	Fa 16 to Fa 17	Fa 17 to Fa 18	Mean
ACT No Scores - 15 % Retained	59.7	44.9	62.4	46.5	48.4	44.8	51.4	51.2
ACT 16-19 % Retained	46.5	46.1	52.2	44.4	47.9	46.5	50.8	47.7
ACT 20-23 % Retained	50.9	51.8	56.6	53.4	62.8	49.6	51.3	53.4
ACT 24-26 % Retained	61.7	60.5	65.1	44.6	64.6	53.4	53.4	56.9
ACT 27+ Retained	54.5	58.8	43.8	42.9	57.1	31.3	70.6	51.4
All Students (T ₁)	48.7	48.5	53.3	47.3	53.3	47.1	51.7	49.8

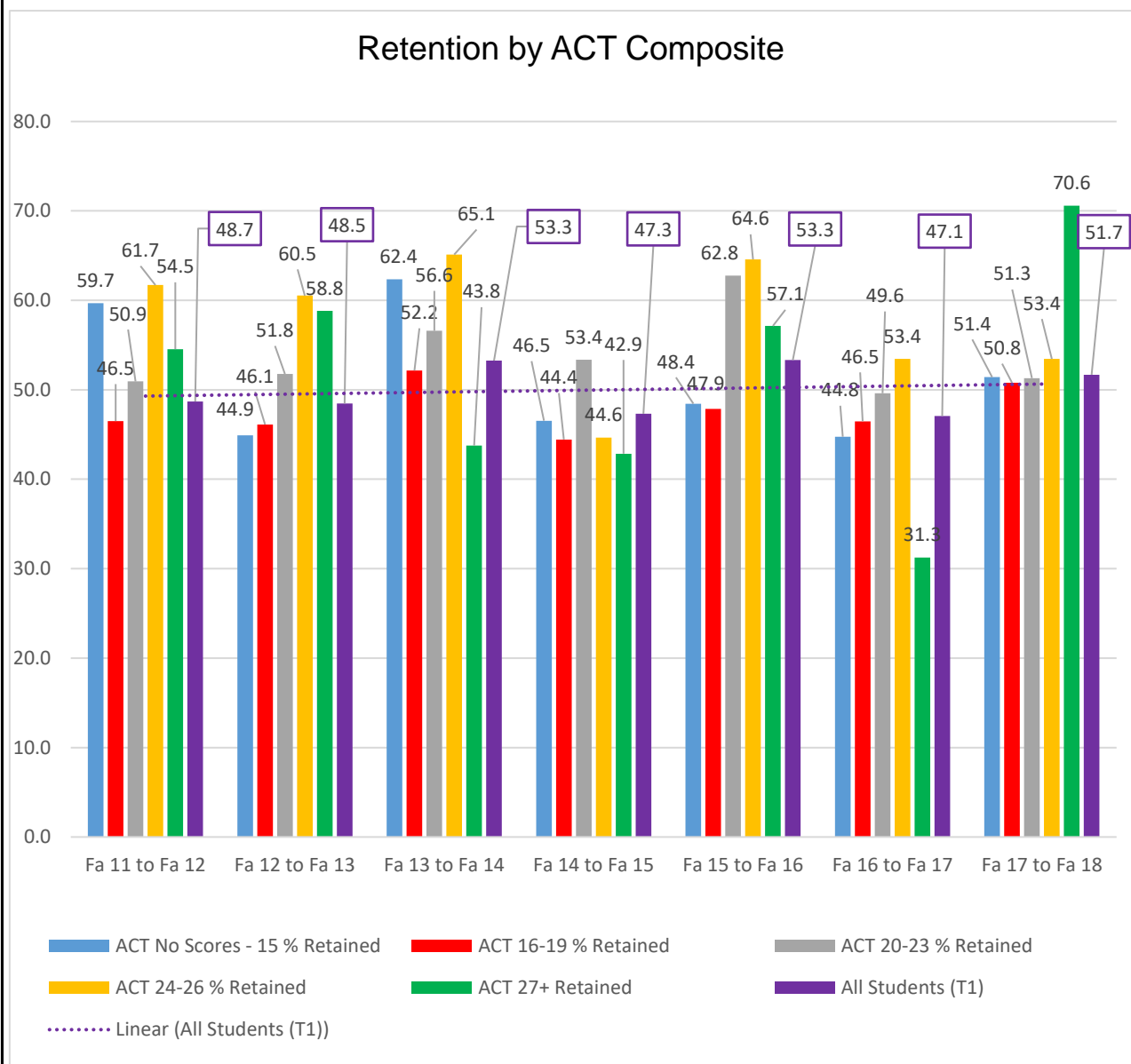
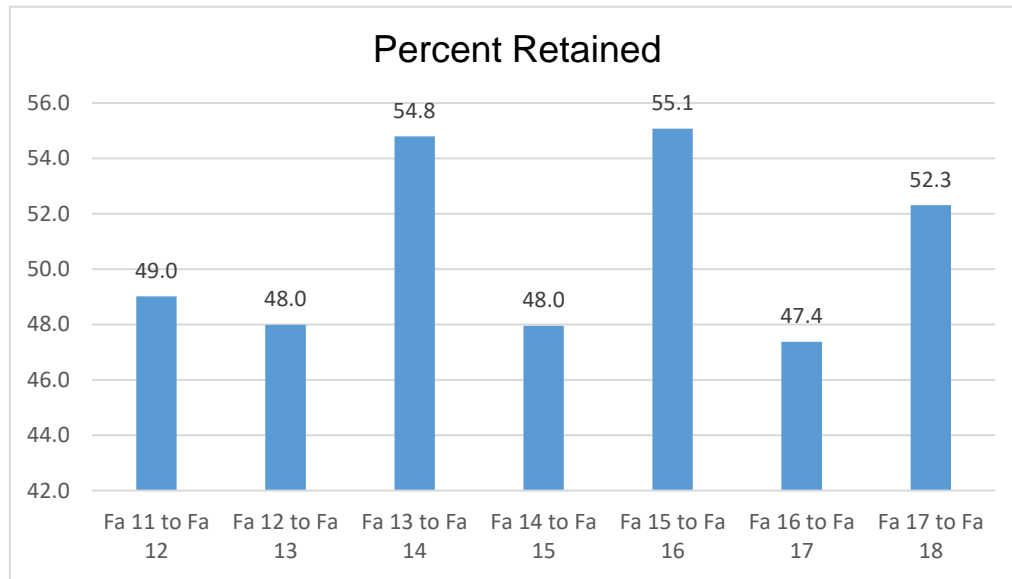


Figure 13. Retention: New First Time Students Enrolled at LSUE Only.

Data Description	Fa 11 to Fa 12	Fa 12 to Fa 13	Fa 13 to Fa 14	Fa 14 to Fa 15	Fa 15 to Fa 16	Fa 16 to Fa 17	Fa 17 to Fa 18	Mean
N Initial	712	694	615	684	661	800	736	700.3
N Retained	349	333	337	328	364	379	385	353.6
Percent Retained	49.0	48.0	54.8	48.0	55.1	47.4	52.3	50.5

**Figure 14. Retention: New First Time Students Enrolled at LSUA Only.**

Data Description	Fa 11 to Fa 12	Fa 12 to Fa 13	Fa 13 to Fa 14	Fa 14 to Fa 15	Fa 15 to Fa 16	Fa 16 to Fa 17	Fa 17 to Fa 18	Mean
N Initial	71	72	84	104	57	63	49	71.4
N Retained	28	37	35	43	19	25	23	30.0
Percent Retained	39.4	51.4	41.7	41.3	33.3	39.7	46.9	42.0

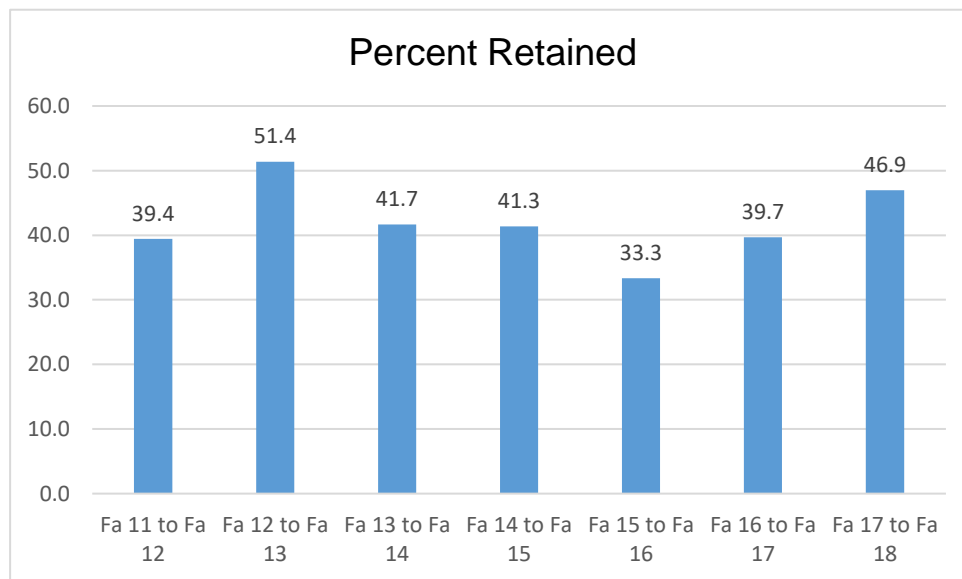
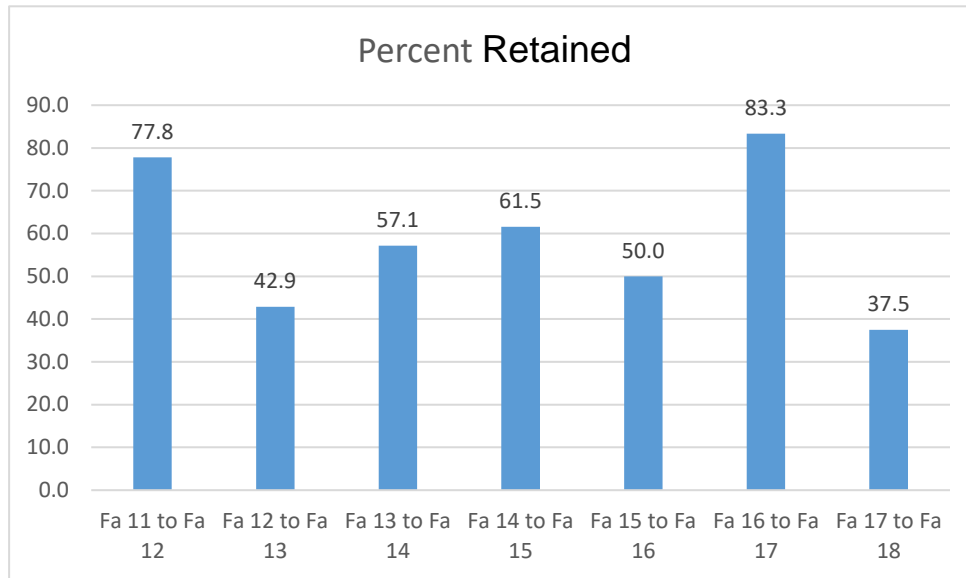
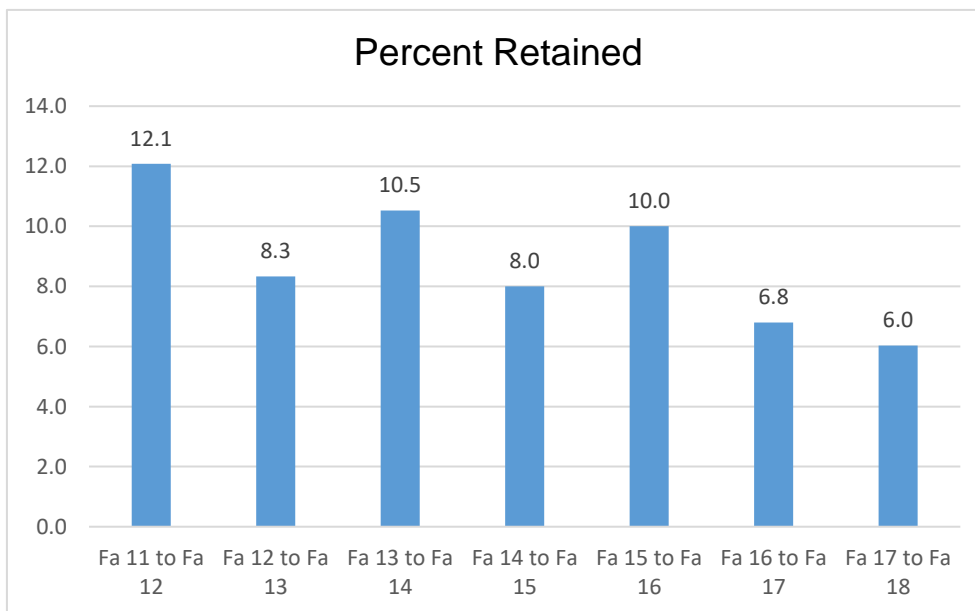


Figure 15. Retention: New First Time Students Enrolled at CALL Only.

Data Description	Fa 11 to Fa 12	Fa 12 to Fa 13	Fa 13 to Fa 14	Fa 14 to Fa 15	Fa 15 to Fa 16	Fa 16 to Fa 17	Fa 17 to Fa 18	Mean
N Initial	9	7	7	13	6	6	16	9.1
N Retained	7	3	4	8	3	5	6	5.1
Percent Retained	77.8	42.9	57.1	61.5	50.0	83.3	37.5	56.3

**Figure 16. Retention: New First-Time Students $0 \leq \text{GPA} \leq 1.000$.**

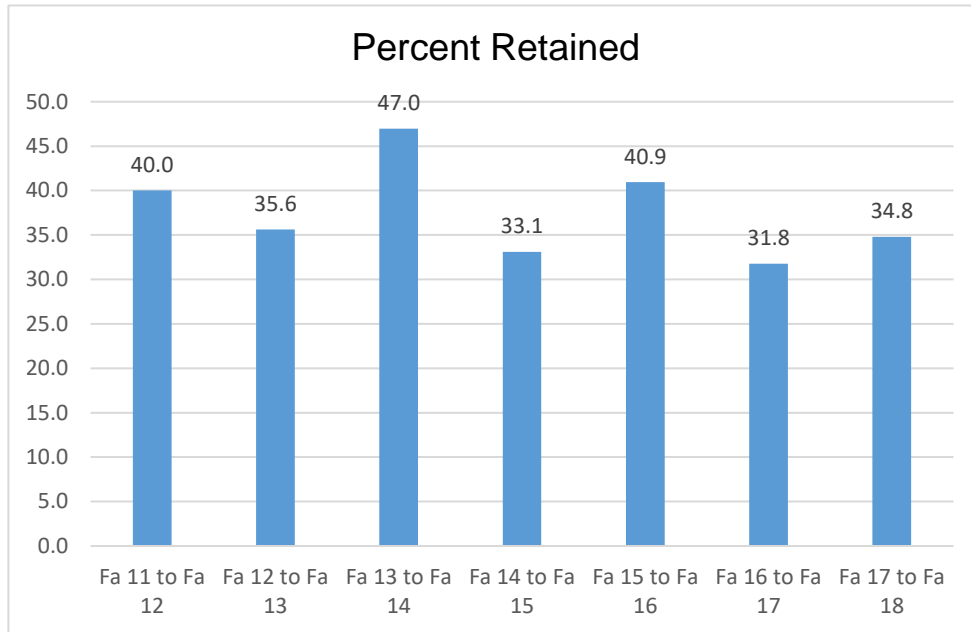
Data Description	Fa 11 to Fa 12	Fa 12 to Fa 13	Fa 13 to Fa 14	Fa 14 to Fa 15	Fa 15 to Fa 16	Fa 16 to Fa 17	Fa 17 to Fa 18	Mean
N Initial	149	132	114	150	110	147	116	131.1
N Retained	18	11	12	12	11	10	7	11.6
Percent Retained	12.1	8.3	10.5	8.0	10.0	6.8	6.0	8.8



use Semester Cum GPA

Figure 17. Retention: New First-Time Students 1.000 < GPA ≤ 2.000.

Data Description	Fa 11 to Fa 12	Fa 12 to Fa 13	Fa 13 to Fa 14	Fa 14 to Fa 15	Fa 15 to Fa 16	Fa 16 to Fa 17	Fa 17 to Fa 18	Mean
N Initial	155	132	115	148	127	148	138	137.6
N Retained	62	47	54	49	52	47	48	51.3
Percent Retained	40.0	35.6	47.0	33.1	40.9	31.8	34.8	37.3

**Figure 18. Retention: New First-Time Students 2.000 < GPA ≤ 3.000.**

Data Description	Fa 11 to Fa 12	Fa 12 to Fa 13	Fa 13 to Fa 14	Fa 14 to Fa 15	Fa 15 to Fa 16	Fa 16 to Fa 17	Fa 17 to Fa 18	Mean
N Initial	288	301	276	302	279	315	307	295.4
N Retained	174	185	174	182	171	177	181	177.7
Percent Retained	60.4	61.5	63.0	60.3	61.3	56.2	59.0	60.2

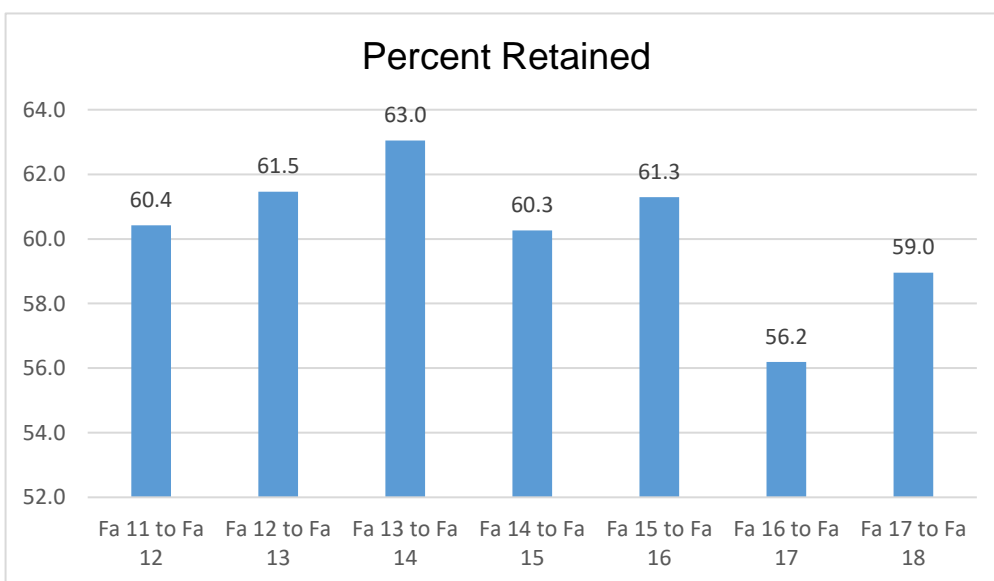


Figure 19. Retention: New First-Time Students 3.000 < GPA ≤ 4.000.

Data Description	Fa 11 to Fa 12	Fa 12 to Fa 13	Fa 13 to Fa 14	Fa 14 to Fa 15	Fa 15 to Fa 16	Fa 16 to Fa 17	Fa 17 to Fa 18	Mean
N Initial	209	211	201	201	208	259	240	218.4
N Retained	136	133	136	136	152	175	178	149.4
Percent Retained	65.1	63.0	67.7	67.7	73.1	67.6	74.2	68.4

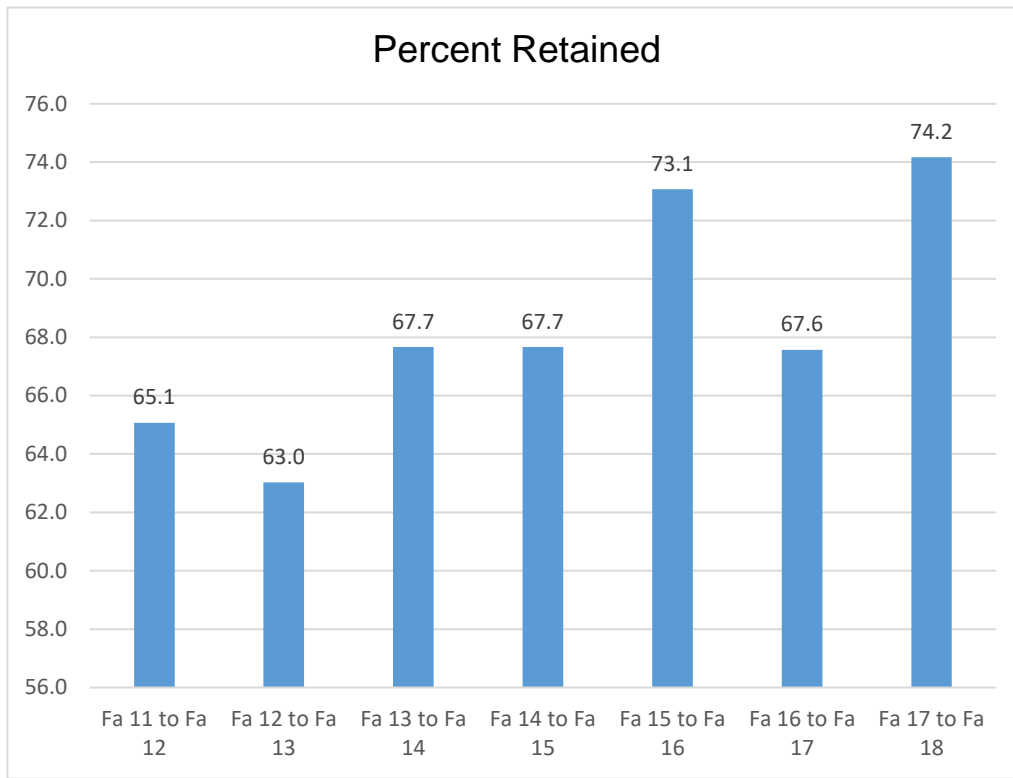


Figure 20. Retention: New First-Time GPA Comparison.

Data Description	Fa 11 to Fa 12	Fa 12 to Fa 13	Fa 13 to Fa 14	Fa 14 to Fa 15	Fa 15 to Fa 16	Fa 16 to Fa 17	Fa 17 to Fa 18	Mean
0 ≤ GPA ≤ 1.000 % Retained	12.1	8.3	10.5	8.0	10.0	6.8	6.0	8.8
1.000 < GPA ≤ 2.000 % Retained	40.0	35.6	47.0	33.1	40.9	31.8	34.8	37.3
2.000 < GPA ≤ 3.000 % Retained	60.4	61.5	63.0	60.3	61.3	56.2	59.0	60.2
3.000 < GPA ≤ 4.000 % Retained	65.1	63.0	67.7	67.7	73.1	67.6	74.2	68.4
All Students (T ₁)	48.7	48.5	53.3	47.3	53.3	47.1	51.7	49.8

